

BUNN[®] **DUAL[®] SH DBC**
WITH SMART FUNNEL[®]
S/N DUAL068000 & UP



INSTALLATION & OPERATING MANUAL

BUNN-O-MATIC CORPORATION

POST OFFICE BOX 3227
SPRINGFIELD, ILLINOIS 62708-3227
PHONE: (217) 529-6601 FAX: (217) 529-6644

29877.0003A 05/05 ©2005 Bunn-O-Matic Corporation

www.bunnomatic.com

File Name: bunn dual sh dbc parts manual.pdf

Size: 2568 KB

Type: PDF, ePub, eBook

Category: Book

Uploaded: 30 May 2019, 23:53 PM

Rating: 4.6/5 from 574 votes.

Status: AVAILABLE

Last checked: 18 Minutes ago!

In order to read or download bunn dual sh dbc parts manual ebook, you need to create a FREE account.

[**Download Now!**](#)

eBook includes PDF, ePub and Kindle version

[Register a free 1 month Trial Account.](#)

[Download as many books as you like \(Personal use\)](#)

[Cancel the membership at any time if not satisfied.](#)

[Join Over 80000 Happy Readers](#)

Book Descriptions:

We have made it easy for you to find a PDF Ebooks without any digging. And by having access to our ebooks online or by storing it on your computer, you have convenient answers with bunn dual sh dbc parts manual . To get started finding bunn dual sh dbc parts manual , you are right to find our website which has a comprehensive collection of manuals listed.

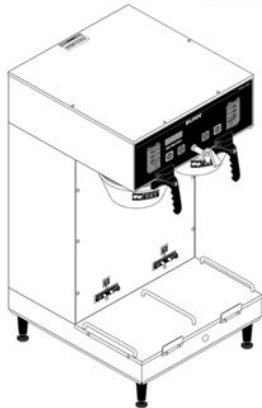
Our library is the biggest of these that have literally hundreds of thousands of different products represented.



Book Descriptions:

bunn dual sh dbc parts manual

BUNN[®] *DUAL[®] SH DBC[®]*
WITH SMART FUNNEL[®]
S/N DUAL068000 & UP



INSTALLATION & OPERATING GUIDE

BUNN-O-MATIC CORPORATION
POST OFFICE BOX 3227
SPRINGFIELD, ILLINOIS 62708-3227
PHONE: (217) 529-6601 FAX: (217) 529-6644

To ensure you have the latest revision of the manual or to obtain the illustrated parts catalog, please visit the Bunn-O-Matic website, at www.bunn.com. This is absolutely FREE, and the quickest way to obtain the latest catalog and manual updates. Contact Bunn-O-Matic Corporation at 1-800-296-6070 to obtain a paper copy of the required Illustrated Parts Catalog mailed via U.S. Postal Service.



29877.0004A 03/12 ©2012 Bunn-O-Matic Corporation

You should have JavaScript enabled in your browser to utilize the functionality of the website Parts Town and 3Wire have joined forces and teamed up with IPC, combining the team you know with the largest inventory in the industry and cuttingedge technology to give you the absolute best experience. Things look a little different, thats true, but you are indeed in the right place. Hi there, welcome to Parts Town. Parts Town and 3Wire have joined forces and teamed up with NDCP, combining the team you know with the largest inventory in the industry and cuttingedge technology to give you the absolute best experience. Parts Town and 3Wire have joined forces and teamed up with SMS, combining the team you know with the largest inventory in the industry and cuttingedge technology to give you the absolute best experience. Hi there! RSCS and Parts Town have joined forces, combining the team you know with the largest inventory in the industry and cuttingedge technology to give you the absolute best experience. Parts Town and 3Wire Foodservice have joined forces. Now youll work with the great team you know, while having access to the largest inventory in the industry and cuttingedge technology. Lets go! Continue to Parts Town What You Can Expect Always Genuine OEM The Most InStock Parts on the Planet Breakthrough Innovations Exceptional Customer Experience Same Day Shipping Ready to get started. Lets go! Continue to Parts Town Looking for beverage equipment parts. Marmon Link is the new home for genuine OEM parts for the Marmon family of equipment manufacturers. Find beverage dispense parts and accessories, as well as parts for Cornelius, Prince Castle, Silver King, Angelo Po, and Saber King units. Continue to Marmon Link Please try again. Please try again later. Please try again later. No worries, it's really easy. No need to remember another username, you will now use your email address. Its listed below. Once logged in you can view pricing and order these parts. <http://www.wings.lv/userfiles/dekko-toys-flash-pad-manual.xml>

- **bunn dual sh dbc parts manual, bunn dual sh dbc parts manual, bunn dual sh dbc**

parts manual, bunn dual sh dbc parts manual download, bunn dual sh dbc parts manual instructions, bunn dual sh dbc parts manual transmission, bunn dual sh dbc parts manual free, bunn dual sh dbc parts manual online, bunn dual sh dbc parts manual 2017, bunn dual sh dbc parts manual parts, bunn dual sh dbc parts manual 1, bunn dual sh dbc parts manual.

BUNN® **DUAL® SH DBC®**
WITH SMART FUNNEL®
S/N DUAL068000 & UP



INSTALLATION & OPERATING GUIDE

BUNN-O-MATIC CORPORATION
POST OFFICE BOX 3227
SPRINGFIELD, ILLINOIS 62708-3227
PHONE: (217) 529-6601 FAX: (217) 529-6644

To ensure you have the latest revision of the manual or to obtain the illustrated parts catalog, please visit the Bunn-O-Matic website, at www.bunn.com. This is absolutely FREE, and the quickest way to obtain the latest catalog and manual updates. Contact Bunn-O-Matic Corporation at 1-800-299-6670 to obtain a paper copy of the required Illustrated Parts Catalog mailed via U.S. Postal Service.



29877.0004A 03/12 ©2012 Bunn-O-Matic Corporation

OK Please try again. Always Available free backorder shipping applies to UPS Ground shipments only. Excludes international orders, UPS Freight orders, consolidated shipments, factory drop ship orders, and ship complete orders. Program details subject to change at any time. No need to type it all again. That just makes things WAY easier. Plus, you'll be able to access any discounts or contract pricing that may be available to you. That's important. The real question is, why wouldn't you log in Everybody loves cookies. Okay, they're not those kind of cookies, but they're still great. Contact BunnOmatic Corporation at 18002866070 to obtain Contact BunnOmatic Corporation at 18002866070 to obtain a paper copy of the required Illustrated Parts Catalog mailed via U.S. A tight coil of copper tubing in the water line will facilitate moving the brewer to clean the counter top. BunnOmatic does not recommend the use of a saddle valve to install the brewer. The size and shape of the hole made in the supply line by this type of device may restrict water flow. Pressing a different switch after a brew cycle has been initiated does not change the brew batch in progress. Slide the funnel into the funnel rails and select batch size. Proceed to step 5. Shop Online and Parts Ship Today. Call us at 1800 4585593 Find Bunn manuals at Parts Town. Call 8004585593 Not to worry, partstown.com is ready to help. Please place this order and all future international orders there. Pamasco cannot be responsible for the content within these manuals. BLOOMFIELD INTEGRITY Brewer Models 9003, 9010, 9012, 9016 Models 0412, 0443, 0471, 0472, 0482, 0420 Keep in mind that the manufacture may have more current manuals, may have deleted or changed the part numbers or contents within the manuals. Pamasco cannot be responsible for the content within these manuals. Pamasco cannot be responsible for the content within these manuals. Pamasco cannot be responsible for the content within these manuals. Pamasco cannot be responsible for the content within these manuals. <http://www.aynispirit.nl/userfiles/dekka-23-tape-head-manual.xml>

BUNN®

DUAL® SH DBC®
WITH SMART FUNNEL®

S/N DUAL068000 & UP



INSTALLATION & OPERATING GUIDE

BUNN-O-MATIC CORPORATION

POST OFFICE BOX 3227
SPRINGFIELD, ILLINOIS 62708-3227
PHONE: (217) 529-6601 FAX: (217) 529-6644



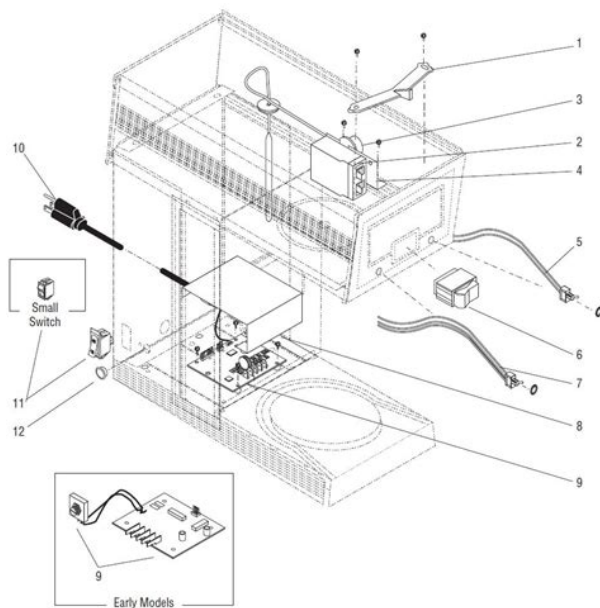
To ensure you have the latest revision of the manual or to obtain the illustrated parts catalog, please visit the Bunn-O-Matic website, at www.bunn.com. This is absolutely FREE, and the quickest way to obtain the latest catalog and manual updates. Contact Bunn-O-Matic Corporation at 1-800-286-6070 to obtain a paper copy of the required illustrated Parts Catalog mailed via U.S. Postal Service.

29877.0004A 03/12 ©2012 Bunn-O-Matic Corporation

WILBUR CURTIS GEM12 Satellite Brewer 1017 Get our best deals and info delivered to your inbox. This information includes what flavor of coffee is being Once the correct flavor name and amount of The information from the funnel handle is then transferred into The brewer can also be programmed to adjust different functions of the This allows the Replace unreadable or damaged labels. This warranty does not apply to any equipment, component or part that was not manufactured This warranty is conditioned on the Buyer 1 giving BUNN Accordingly, statements by such. Using the online preview, you can quickly view the contents and go to the page where you will find the solution to your problem with Bunn Dual SH DBC With Smart Funnel DUAL068000. To start viewing the user manual Bunn Dual SH DBC With Smart Funnel DUAL068000 on full screen, use the button Fullscreen. However, if you do not want to take up too much of your disk space, you can always download it in the future from ManualsBase. The option to print the manual has also been provided, and you can use it by clicking the link above Print the manual. You do not have to print the entire manual Bunn Dual SH DBC With Smart Funnel DUAL068000 but the selected pages only. paper. If you want to quickly view the content of pages found on the following pages of the manual, you can use them. Replace unreadable or damaged labels.Light indicates the selected batThe water must be at the SET READY tempera ture or higher for the display to indicate READY TO BREW. If brew lockout is enabled, the brewing process will not start below this READY temperature. NOTE The upper limit for SET READY temperature is 2. Please try again.Please try again.In order to navigate out of this carousel please use your heading shortcut key to navigate to the next or previous heading. Register a free business account To calculate the overall star rating and percentage breakdown by star, we don't use a simple average.

Instead, our system considers things like how recent a review is and if the reviewer bought the item on Amazon. It also analyzes reviews to verify trustworthiness. Call us at 18002395152 Call 18002395152 For additional OEM parts and manuals visit partstown.ca MON FRI 730AM 700PM ET. The company is committed to delivering the highest possible quality beverage in each cup through its complete line of dispensed beverage equipment including coffee brewers and grinders; liquid coffee dispensers, iced tea brewers; hot chocolate, granita, and juice machines; precise temperature water systems; water quality systems and paper filters. BUNN assures high quality products by adhering to strict guidelines at production plants. This dedication to quality resulted in

an upgrade in the manufacturing facilities quality management registration through ISO 90012008. The global headquarters is located in Springfield, Illinois, USA, where the company strives for total customer satisfaction through superior equipment and unmatched customer service with support from plants and warehouses in five North American locations, as well as warehouses or offices in Mexico, Brazil, Germany, China and the United Kingdom. When it comes to Bunn equipment maintenance or repair look no further than Eichenauer Services can help. For over 65 years they have been offering affordable, courteous and professional Bunn equipment repair for their customers throughout Illinois. As well as performing repairs on BunnOMatic equipment Eichenauer services is also a distributor of Bunn coffee, tea and other beverage equipment replacement parts. Eichenauer Services Inc.. View on Mobile.

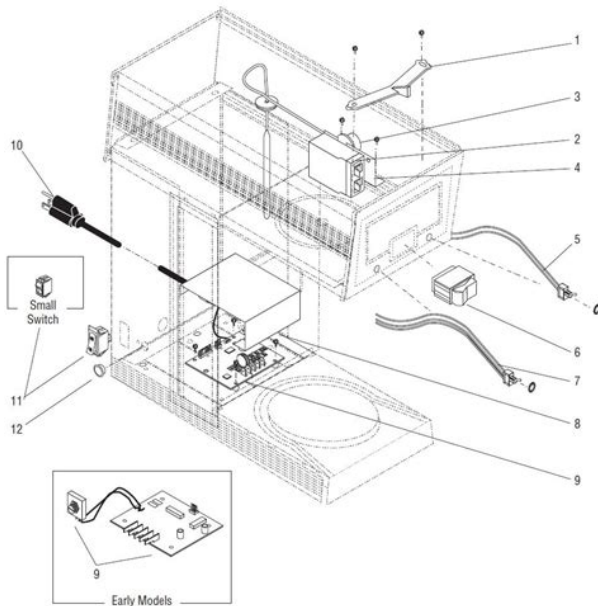


<https://congviendis.vn/vi/3gs-iphone-manual-pdf>

Page Count 54 Contact BunnOMatic Corporation at 18002866070 to obtain a paper copy of theThese warranty periods run from the date of installation BUNN warrants that the equipment manufacturedThis warranty does not apply to any equipment, component orThis warranty isBUNN, shipping the defective equipment prepaid to an authorized BUNN service location; and 3 receiving priorBUNN. Accordingly, statements by such individuals, whether oral or written, do not constitute warranties andIf BUNN determines in its sole discretion that the equipment does not conform to the warranty, BUNN,BrewWISE, BUNN Gourmet Ice, BUNN PourOMatic, BUNN, BunnOMatic, BunnOMatic, BUNNlink, BUNNserve, BUNN. Espresso, DBC, Dr. Brew, Dual, EasyClear, EasyGard, Easy Pour, FlavorGard, Gourmet Ice, Gourmet Juice, High Intensity. IMIX, Infusion Series, Legendary for Quality, The Mark of Quality in Beverage Equipment Worldwide, My Cafe, PowerLogic, SafetyFresh, Single, Smart Funnel, Smart Hopper, Soft Heat, SplashGard, System III, ThermoFresh, AXIOM, Beverage Profit Calculator, Beverage Bar Creator, BrewLOGIC, BrewMETER, BrewWIZARD, BUNNSERVE, BUNNsource, Coffee. At Its Best, Coffee Spot, Cool Froth, Digital Brewer Control, Earth1st, Earth 1st, Earth First, Intellisteam, Nothing Brews. Like a BUNN, Pouring Profits, Pulse Wave, Quality Beverage Equipment Worldwide, ScalePro, Signature Series, Silver. Series, Smart Heat, SmartWAVE, Tea At Its Best, The Horizontal Red Line, Titan, Ultra, are either trademarks or registeredThis information includes what flavor of coffeeOnce the correct flavor name andThe information from the funnel handle is thenThe brewer then takes this information and dispenses the amount of water presetThe brewer can also be programmed to adjustElectrical Requirements.5. Plumbing Requirements.6. Operating Controls.7. Initial Setup and Coffee

Brewing.8. Cleaning.9. Glossary.10Programming the Brewer.12Recipe Programing Methods.13. Flow Diagram.

<http://ferienwohnung-dorsten.com/images/boston-acoustics-cr77-manual.pdf>



14Set New Recipe using a Smart Funnel and G92T DBC or MHG Grinder.17Set New Recipe using a Recipe Card.19. Set New Recipe no Smart Funnel nor G92T DBC or MHG Grinder.20Assign Recipes.30. Copy Settings.30. Enable Ads.31. Set Temp Brewing Temperature.31. Set Ready Ready Temperature.32. Refill Adjust Sensitivity.32. Calibrate Flow.33Funnel and Server Detect.36. Service Tools.37Factory Defaults Reset.40. Troubleshooting.41. Schematic Wiring Diagram.52. Page 3Replace unreadable or damaged labels.International Code Council and the Food. Code Manual of the Food and Drug Administration FDA. For models installed outsideNote This electrical service consists of 2Note This electrical service consists of 3 current carrying conductors Neutral, L1 and L2ELECTRICAL HOOKUP Models without power cord. Damage caused by incorrectReplace the front panel.If plumbingELECTRICAL HOOKUP Models with power cordDamage caused byNOTE The brewer is shipped without a plug on the power cord. Qualified service personnel must selectIf plumbing has been hooked up, the brewer is ready for Initial SetUp. Failure to follow these instructions canA shutoff valve should be installed in the line before the brewer. Install a regulator in the line when pressure is greater than 90 psi 620 kPa to reduce it to 50 psi 345 kPa. The. A tight coil of copper tubing in the water line will facilitate moving the brewerBunnOMatic does not recommend the use of a saddle valve to install the brewer. TheThis equipment must be installed to comply with the International Plumbing Code of the International. Code Council and the Food Code Manual of the Food and Drug Administration FDA.Page 6Pressing the switch corresponding to the Small, Medium, or Large batch selects the amount of coffee to bePressing this switch during the brewPressing this switch during the programmingMomentarily pressing and releasing this switch begins a brew cycle.Pressing and holding the upper right hidden switch allows entry to the programming menus.

<https://www.figlitornatialpadre.com/images/boston-acoustics-cr9-manual.pdf>



Pressing and This is the display which shows the various functions of the brewer and allows the programming to be accomplished. These are the hidden switches which are used to program the brewer. The upper left hidden switch can be used to scroll backwards through the function list. Page 7 Water will begin flowing into the tank and stop when the tank is Display will show PLEASE WAIT. TANK FILLING until tank is filled with water. Display will Release it when you hear the tank refilling. Refer to adjustments for the Set Brew Volumes section of Slide the funnel into the funnel rails and select batch size. Proceed to The brewer will read the size ground through the chip in the funnel If the brewer has There may be certain situations in which the brew cycle will not begin when the brew switch is pressed BREW TEMPERATURE TOO LOW wait until heated or cancel BREW LOCKOUT option. FUNNEL NOT IN PLACE or using a standard brew funnel cancel FUNNEL DETECT option. CHECK FUNNEL remove funnel, empty previously brewed grounds and grind a new batch into funnel. SERVER NOT IN PLACE place Soft Heat Server, or cancel SERVER DETECT option. If both sides are brewing simultaneously, NOTE In hard water areas, this may need to be done daily. It will help prevent liming problems in the brewer Used for loading advertising BREW LOCKOUT The inability to initiate a brew if the water temperature is less than the ready temperature BYPASS The process of diverting a portion of the brew water to the outside of the paper filter so that it does This process is sometimes used to optimize the flavor of the finished CHIP A computer chip containing either recipes for specific coffee flavors or advertising messages which are One chip is embedded in each Smart Funnel handle to carry the CYCLE TIME The total length of time to complete a brew cycle. Does not include Drip Time.

DRIP TIME The length of time from when the water spray over the grounds ends, to the time that no water drips FACTORY DEFAULTS The factory preset brew settings that were installed into the brewer's memory. FIRST ON TIME During a pulse brew or preinfusion, this is the time set for the initial flow of water over the FUNNEL DETECT Sets the inability to initiate a brew cycle if the funnel is not properly inserted into the funnel FUNNEL SENSING COIL A sensor on the front hood of the brewer, which reads what name and batch size of LAST ON TIME During a pulse brew, this is the time set for the second on time, and each alternating on time MAIN SCREEN The term used to describe the screen that is displayed when the brewer is not in use. This screen NONAME COFFEE The term for the recipe used by the brewer when there is no coffee name stored in the funnel. The

brewer can contain separate NoName recipes for the left and right brewing positions. OFFTIME During a pulse brew or preinfusion, this is the time set for the length of time that the water is notPREINFUSION The process of beginning a brewing cycle with an initial spray of water onto the grounds followedAfter the programmed pause, the spray continues without interruption until thePULSE BREW The process which allows the brew water to start, then stop, repeatedly, over the grounds in orderPulse brew is also used in some instances to prevent a funnelRECIPE Set of brewing parameters stored in the brewer. The parameters are unique for each coffee name andRECIPE CARD An assembly consisting of a computer chip and an instruction label. Used for loading a recipeSERVER DETECT Sets the inability to initiate a brew cycle if the server is not properly placed on the stand belowSOFT HEAT The type of server and brewer which are used as part of the Smart Funnel system. The server isThe server contains a temperaturecontrolled heater which maintains the coffee at a constant temperature.

<https://www.lipfish.no/wp-content/plugins/formcraft/file-upload/server/content/files/1626d2738c277c---california-coin-laundry-association-owners-manual.pdf>

Page 9This allows for theProgramming of the brewer is achieved by entering a certain function. Then, by the use of hidden programmingThis is used to scroll backwards through the function list. This is used to select options that appear on the display during programming. Page 10There is one function in Level 1. All other functionsThe following function screens are in order of appearance. Each screen will have instructions on how toIf none of the five programming switches are pressed within one minute during the setup of the brewer,To access this function screen press and hold the. This screen will be shown when the brewer is readyHEATING to READY TO BREW. PROGRAMMING LOCKOUT SWITCH mounted onThis switch can be set to prevent access to theOnce all the correct brew settings are programmed, the operator canPress hereThe YES or NO should be flashing. Select YES toSelect NO to permit brewingWhen finished, press and release DONE. ThisSCREEN on the display.Smart Funnel Brewer.Grinder. Certain coffee NAMES are stored in the G92T DBCThe funnel is then inserted into the brewers left sideThis then allowsNAME. Each coffee NAME can be set individually toIf using a coffee name not in the grinders memory,This includes the COFFEEThis allows the operator to enter ONE set of brewingSH Brewer. This is referred to as a NO NAME coffeeNAME brewing parameters set up prior to brewing. This includes BREW VOLUMES, BYPASS PERCENTAGES, PULSE BREW TIMES, PREINFUSION TIMESSEts unit ofEnglishContinuePage 13PROGRAM FLOW DIAGRAM Cont.PreIReturn to APROGRAM FLOW DIAGRAM Cont.Page 15WARNING Changing the unit of measure will eraseAll preinfusion, pulse times, etc will also be erased. If usingProcedure for modifying units of measureThe display should nowWhile the changeDEFAULTS and a count down will begin.Grinder. This function allows the operator to set BREWCertain coffee NAMES are stored in the G92T. DBCs memory.

When a particular name of coffee isThe name of the coffeeThis then allowsPERCENTAGES, PULSE BREW TIMES, and DRIPOUT. TIMES for that particular coffee NAME. It also allowsBREW LOCKOUTS, etc. Each coffee NAME can be setNOTE Before beginning setup, place a server beneathThe coffee name is preselected and stored in theWhen the grinder stopsRelease the switch, then press switch again untilThe display should read. INSERT FUNNEL WITH NEW NAME, then USE. LEFT SIDE ONLY, and finally, QUIT SETUP TheseThen the screen will display BREW OZ.OR ADJUSTING for descriptionSET NEW RECIPE cont.Continue setting all batchIf the threeThis will advanceBREW ENTER TIMES. SET DRIP TIME. ReferA batch light should also be blinking.To set to OFF, continue to press and release until. OFF appears on the screen.The display should read 3 BATCHES DONE.The display should read 3 BATCHES DONEThe screen should show the name of the coffeeIf they are correct,EASY PULSE brewing into a funnel press YESThe display should read. ENTER TIMES. Press and release YES and proceedSET NEW RECIPES cont.The G92T DBC or MHGs memory contains certainCARD can be obtained from the factory. The RECIPE. CARD would

include all the information needed to set the information from this information can include the coffee name, BREW VOLUMES, BYPASS PERCENTAGES, PULSE BREW TIMES, and, DRIP OUT TIMES for that particular coffee NAME. These can all be loaded in seconds. Contact Bunnomatic Corporation for the availability of RECIPE CARDS. NOTE Instructions to program the brewer and grinder Procedure to program the coffee name CARD to the brewer. SHOW. The display will scroll through all of the brew settings for that name are now Page 19 SET NEW RECIPES cont. It is possible to operate the brewer without using. If a standard funnel, or if a non-DBC grinder is used This means that There are two NO NAME coffee programs that They are referred to as NO. NAME LEFT and NO NAME RIGHT. The left and right PERCENTAGES, PULSE BREW TIMES, and DRIP OUT.

TIMES. The brewer will perform in the same capacity The instructions for programming the NO NAME The same steps Note that when the display reads NO NAME LEFT, Otherwise, press NEXT to display NO NAME Server beneath each brew funnel. Page 20 It allows the operator It also allows the operator to modify change any PULSE BREW TIMES, and DRIP OUT TIMES for a Finally, this function is used to set up the two. NO NAME coffee BREW VOLUMES, BYPASS PERCENTAGES, PULSE BREW TIMES, and DRIP OUT Release the switch, then The display should now The screen will scroll To advance to Press and release NO to The indicator signifies volume Procedure for modifying recipes brew ounces. Range 10.0 oz to 400 oz for all three batch sizes Release the switch, then The display should now The display should Press and release the batch size to be modified. Continue setting all batch sizes. The number signifies the percentage of the brew volume which does Modifying recipes bypass percentages. Range 0% to 90% for all three batch sizes. NOTE If the brewer is already in the % BYPASS screen, Release the switch, The display should now The display should The display should read The display should now Press and release the batch size to be modified. The display should read 3 BATCHES DONE Another alternative This feature allows TIME level to when it drains out of the funnel to a These three times can be set two different ways. The first is accomplished by utilizing the EASY PULSE The other allows the actual times to be entered This is done by utilizing the. ENTER TIMES screen and following the subsequent Either of these methods can be used to set the Modifying pulse brew. Range 1st on time off to 4 minutes. Off time off to 4 minutes. Last on time Preinfusion to 4 minutes. NOTE If the brewer is already in the SET PULSE BREW Release the switch, The display should now The display should The display should read The display should now The display should read The display should now The display should now The display should read. ENTER TIMES.

Press and release YES and proceed SET PULSE BREW cont. See SET PULSE BREW ENTER TIMES Repeat step 2 for each batch size to be set. The display should read 3 BATCHES DONE .YES. This will display the 1st, OFF, and LAST times The display should now The display will read ENTER The display should now The display will now The display will now The display will show The display will then read DRIP TIME. PULSE BREW function and return to the MAIN This is a special case of pulse brew. It is not possible to set a batch size to have both pulse brew and NOTE Pressing the upper right hidden button before NOTE The procedure to enter the PULSE BREW The display should now The display will read ENTER The display should now The display will now The display will now The display will show The display will then read DRIP TIME. PULSE BREW function and return to the MAIN This function allows the setting or modification Procedure to modify drip times. Range OFF to 10 minutes for all three batch sizes. NOTE If the brewer is already in the DRIP TIMES Release the switch. Press The display should now The display should The display should read The display should now The display should read The display should now The display should now read. DRIP TIME, along with either the word OFF, or a batch light should also be The display should The screen should show the name of the coffee Page 29 Procedure to assign recipes Release the switch. Press NAME coffee is a flavor that is not in the grinders For example, once the left sides 3 batch sizes are The data can also be transferred If two different NO NAME setups are required, Procedure to copy settings Release the switch.

Continue to press and release switch until the displayThe display will read AREThe display will thenThe displayNOTE Make sure the water in the tank is touchingREFILL and shows a number on both sides of theNOTE Always make sure that the number on the rightAnother alternative is to press and release either ofThis function allows the operator to view or to enterProcedure to adjust the flow rate settingWhen finished setting the right side, press andThis function allows the operator to view or to enterThis is NOT used to change the actual flow rate, but toThe unit of measure is ounces per minute.CALIBRATE FLOW. Another alternative is to pressProcedures to calibrate the sprayhead flow rateHEAD CAL function screen. Pressing NO in the. CALIBRATE FLOW screen will advance to the nextThe display should read. CONTAINER READY If the container is underThe display should readSPRAY. 60 SEC TO FINISH. The 60 second timerENTER OZ, along with a number signifying ouncesFLOW, along with the correct flow rate of theAfter about 5FLOW screen.Procedure to adjust the flow rate settingPage 33CALIBRATE FLOW cont.Release the switch. Continue to press and release switch until the displayHEAD CAL function screen. Pressing NO in the. CALIBRATE FLOW screen will advance to the nextCALIBRATION screen.The display should read. CONTAINER READY If the container is under theBYPASS. 60 SEC TO FINISH. The 60 second timerLEFT or RIGHT OZ., along with a number signifying ounces per minute.FLOW, along with the correct flow rate of the bypass in ounces per minute. After about 5 seconds,Page 34CALIBRATE FLOW cont.Release the switch. Continue to press and release switch until the displayNEXT. The four counters are as follows. LEFT total brews on left side resettable. RIGHT total brews on right side resettable. LEFT AND RIGHT total brews on left and rightLEFT AND RIGHT total brews on left and rightPage 35BREW COUNTERS cont.

Press and release NO to advance to theThis function allows the operator to prevent theIf this functionFUNNEL NOT IN PLACE, until one is in place.This is selected when brewing with aNOTE If YES is selected and a brew cycle is attemptedAnother alternative isPage 36Testing individual components outputs. This will allow the operator to test the operationThe components that can be individually tested are asLeft Brew Valve. Left Bypass Valve. Left Funnel Lock. Left Server. Right Brew Valve. Right Bypass Valve. Right Funnel Lock. Right Server. Refill Valve. Tank Heaters. Heater ContactorSERVICE TOOLS cont.. Procedure to test components outputsPressing NO willThe display should readIf the brewNOTE To bypass testing any component, press NEXTNOTE The tank heater will automatically turn off ifConnect a voltmeter across aPress OFF and confirm the voltage is zero.This will return to the MAIN SCREEN. Procedure to test switches. This function allows the operator to test the opera10. To test LEFT BREW BYPASS, press ON. If thePress NEXT to advance to the next component toIf the fundisplay reads UNITS. Release the switch. ContinueIf the server andThis advancesThe display will readIf the refill valveSERVICE TOOLS cont.If the name doesEach switch canThis will returnThis function allows the operator to test the operation of the Soft Heat servers. It will also show if theRelease the switch. Continue to press and release switch until SERVICE. TOOLS appears.Press YES to run testsThis advancesThe display should read IN. PLACE with arrows pointing to the left and rightProcedures to test coil frequencyRelease the switch. Continue pressing and releasing the upper rightPress YES to run testsContinue toThe display will show theThis is forNOTE If the operator wishes to test more than oneUse the flow chartPage 39Factoryset default values will replace all previous settings.UNITS appears. Release the switch. Press andDEFAULTS. Press and release YES.

The displayThe selectedWhen correct brewerPressing NO in this screen will revert to the MAIN. SCREEN. Press YES to replace the defaults. ThisThis screen will alternate with ARE YOUPress YES to load the defaults. This will then revert to the MAIN SCREEN,It will NOT reset thePage 40Technical Service Department.All electronic components have 120 240 volt ac and low voltage dc potential on their terminals. Shorting of terminals or the application of external voltages may result in board failure. Intermittent operation of electronic circuit boards is unlikely. Board failure will normally be permanent. If an intermittent condition is encountered, the cause will likely be a switch

contact or Solenoid removal requires interrupting the water supply to the valve. Damage may result if solenoids are energized for more than ten minutes without a supply of water. The use of two wrenches is recommended whenever plumbing fittings are tightened or loosened. This will help avoid twists and kinks in the tubing. Make certain that all plumbing connections are sealed and electrical connections tight and isolated. This brewer is heated at all times. Keep away from combustibles. Exercise extreme caution when servicing electrical equipment. Disconnect the brewer from the power source when servicing, except when electrical tests are performed. Follow recommended service procedures. Replace all protective shields or safety notices. Screen Displayed Troubleshooting Procedures Empty cup. Correct cause and Position the server so that the connector pins on the server make contact with connector on the brewer. Disable the SERVER DETECT function. Page 41 Screen Displayed Troubleshooting Procedures Position the funnel so that the sensor Disable the FUNNEL DETECT function. Remove funnel, check contents, and Screen Displayed. Possible Cause. Troubleshooting Procedures To resume brewing, correctly To resume brewing, press BREW Service Required Service Required. Service Required.

<https://www.thebiketube.com/acros-3gx-setup-manual>